



CENTRAL ZONE

ZONE STATS...

- Population** 470,490
- Life Expectancy** 80.1 years
- Hospitals** 30
- Physicians** 707
- AHS Employees** 12,631
- Volunteers** 3,292
- Size** 95,000 km²
- Meals Served** 2.4 M per year

DID YOU KNOW...

- More than 300 new spaces, providing a variety of continuing care and supportive living options, have opened in the Central Zone since 2012.
- The Two Hills Health Centre is home to just the second rehabilitation unit in Alberta to use the ReTouch system, a therapeutic screen system that helps patients on the stroke and geriatric empowerment unit regain mobility and strength.
- Residents in Rocky Mountain House are now able to be screened for colorectal cancer at the Rocky Mountain House Health Centre, following

- the addition of a state-of-the-art endoscopy system, which helps physicians screen and diagnose colorectal cancer and other bowel disease.
- The Pediatric Weight Management Program, which can help families plan for healthy and nutritious eating habits for children, is now available in person in Camrose, Red Deer, Vegreville and Vermilion, as well as remotely through Telehealth, making it accessible across the Zone while reducing travel for families in outlying communities.



ALPHABETICAL LISTING OF SERVICES BY COMMUNITY • CENTRAL ZONE

For more information about health care options, programs and services, contact your local facility at the numbers provided below. Many programs and services, such as Addiction & Mental Health and Public Health, are available through your local health centre.

ANDREW
Laboratory Services 780-656-3034

BASHAW
Bashaw Community Health Centre 780-372-3731
Bashaw Home Care/Palliative Care 780-372-4155

CAMROSE
Camrose Addiction and Mental Health
Addiction Services 780-672-1181
Mental Health Services 780-679-1241
Camrose and Area Mammography Centre 780-679-6146

Camrose Community Cancer Centre 780-679-2822
Camrose Community Health Centre/Public Health 780-679-2980

Camrose Home Care 780-679-2900
Camrose Professional Centre
Pediatric Specialty Clinic 780-608-8611
Camrose St. Mary's Hospital 780-679-6100
Healthy Living Centre 780-608-8683
MSK (hip and knee) Clinic 780-678-3400

CASTOR
Castor Community Health Centre 403-882-3404
Castor Our Lady of the Rosary Hospital 403-882-3434

CONSORT
Consort Community Health Centre 403-577-3770
Consort Hospital and Care Centre 403-577-3555
Consort Mental Health Services 403-577-3770

CORONATION
Coronation Community Health Centre 403-578-3200
Coronation Hospital and Care Centre 403-578-3803

DAYSLAND
Daysland Health Centre 780-374-3746

DRAYTON VALLEY
Drayton Valley Community Cancer Centre 780-621-4888
Drayton Valley Community Health Centre 780-542-4415
Drayton Valley Hospital and Care Centre 780-542-5321
Drayton Valley Addiction and Mental Health Services 780-542-3140

DRUMHELLER
Drumheller Addiction and Mental Health Services - 403-820-7863
Drumheller Community Cancer Centre 403-820-7985
Drumheller Environmental Health and Support Services 403-823-3341
Drumheller Health Centre 403-823-6500

ECKVILLE
Eckville Community Health Centre 403-746-2201

ELNORA
Elnora Community Health Centre 403-773-3636

HANNA
Hanna Addiction Services 403-820-7863
Hanna Health Centre 403-854-3331
Hanna Mental Health Services 403-854-5276

HARDISTY
Hardisty Health Centre 780-888-3742

INNISFAIL
Innisfail Health Centre 403-227-7800
Innisfail Mental Health Services 403-227-4601

KILLAM
Killam Addiction Services 780-672-1181
Killam Health Care Centre 780-385-3741

Killam Mental Health Services 780-385-7161

KITSCOTY
Kitscoty Public Health/Rehab 780-846-2824

LACOMBE
Lacombe Community Health Centre 403-782-3218
Lacombe Addiction and Mental Health Services 403-782-3413
Lacombe Hospital and Care Centre 403-782-3336

LAMONT
Lamont Health Care Centre 780-895-2211

LLOYDMINSTER
Lloydminster Community Cancer Centre 306-820-6144
Lloydminster Public Health Services 306-820-6225
Lloydminster Home Care 306-820-6200
Lloydminster Hospital (Saskatchewan) 306-820-6000
Lloydminster Mental Health Services 306-820-6250
Lloydminster Patient Care Centre
Laboratory Services 780-875-1590

OLDS
Olds Campus Community Health Centre 403-559-2150
Olds Community Health Centre 403-556-8441
Olds Hospital and Care Centre 403-556-3381
Olds Addiction and Mental Health Services 403-507-8174

PONOKA
Centennial Centre for Mental Health and Brain Injury 403-783-7600
Ponoka Community Health Centre 403-783-4491
Ponoka Hospital and Care Centre 403-783-3341
Ponoka Addiction and Mental Health Services 403-783-7903

PROVOST
Provost Addiction and Mental Health
Provost Addiction Services 780-753-6958
Provost Mental Health Services 780-753-2575
Provost Community Health Centres 780-753-6180
Provost Health Centre 780-753-2291

RED DEER
Central Alberta Cancer Centre 403-343-4526
Red Deer Addiction Services 403-340-5274
Red Deer 49 Street Community Health Centre 403-314-5225
Red Deer 49 Street Community Health Centre - Mental Health Services 403-340-5466
Red Deer Bremner Avenue Community Health Centre 403-341-2100
Red Deer Johnstone Crossing Community Health Centre 403-356-6300
Red Deer Regional Hospital Centre 403-343-4422

RIMBEY
Rimbeys Addiction and Mental Health Services 403-843-2406
Rimbeys Adult Day Support 403-843-2030
Rimbeys Community Health Centre 403-843-2288
Rimbeys Hospital and Care Centre 403-843-2271

ROCKY MOUNTAIN HOUSE
Rocky Addition and Mental Health Services 403-844-5235
Rocky Mountain House Health Centre 844-846-3347

SEDGEWICK
Sedgewick Home Care/Public Health/Rehab 780-384-3652

STETTLE
Stettler Addiction Services 403-742-7523

Stettler Community Health Centre 403-742-3326
Stettler Hospital and Care Centre 403-742-7400
Stettler Mental Health Services 403-743-2000

SUNDRE
Sundre Community Health Centre 403-638-4063
Sundre Hospital and Care Centre 403-638-3033
Sundre Mental Health Services 403-636-6278

SYLVAN LAKE
Sylvan Lake Community Health Centre 403-887-2241
Sylvan Lake Addiction and Mental Health Services 403-887-6777

THREE HILLS
Three Hills Addiction Services 403-820-7863
Three Hills Health Centre 403-443-2444
Three Hills Mental Health Services 403-443-8532

TOFIELD
Tofield Addiction Services 780-672-1181
Tofield Health Centre 780-662-3263

TROCHU
St. Mary's Health Centre 403-442-3955

TWO HILLS
Two Hills Health Centre 780-657-3344

VEGREVILLE
St. Joseph's General Hospital 780-632-2811
Vegreville Addiction Services 780-632-6617
Vegreville Home Care/Public Health/Rehab 780-632-3331
Vegreville Mental Health Services 780-632-2714

VERMILION
Vermilion Addiction Services 780-842-7619
Vermilion Community Health Centre 780-853-5270
Vermilion Health Centre 780-853-5305
Vermilion Mental Health Services 780-581-8000

VIKING
Viking Health Centre 780-336-4786
Viking Home Care/Public Health/Rehab 780-336-4782

WAINWRIGHT
Wainwright Addiction and Mental Health
Addiction Services 780-842-7619
Wainwright Mental Health Services 780-842-7522
Wainwright Community Health Centre 780-842-4077
Wainwright Health Centre 780-842-3324

WETASKIWIN
Wetaskiwin Addiction Services 780-361-1358
Wetaskiwin Community Health Centre 780-361-4333
Wetaskiwin Hospital and Care Centre 780-361-7100
Wetaskiwin Mental Health Services 780-361-1245

WINFIELD
Winfield Community Health Centre 780-682-4755

CONTINUING CARE ACCESS IN CENTRAL ZONE
1-855-371-4122

CONTINUING CARE FACILITIES

Continuing care in Alberta includes home care, supportive living, long-term care, hospice and end of life care. Alberta Health Services has programs, services and supports to help Albertans of all ages lead active and fulfilling lives, close to home.

HOME CARE provides health care services and supports to help people remain in their own homes for as long as possible.

SUPPORTIVE LIVING facilities provide care to help people live with as much independence as their abilities allow. AHS works with the sites to ensure the client's health care needs are met.

LONG-TERM CARE provides services for people with complex health care needs who can no longer be safely cared for at home or in a supportive living facility.

NEED HELP? HAVE CONCERNS?
Call Health Link at 811 or visit www.ahs.ca/continuingcare

PRIMARY CARE NETWORKS

PROVOST PCN 780-753-2271 Serves Provost and surrounding area

BIG COUNTRY PCN 403-442-2252
www.bigcountrypcn.com Serving Three Hills, Trochu, Hanna, Drumheller, Stettler, Coronation, Consort and surrounding area

DRAYTON VALLEY PCN 587-982-7307
www.draytonvalleypcn.ca Serving Drayton Valley, Breton and Winfield

KALYNA COUNTRY PCN 780-603-4455
www.kalynapcn.ca Serving Vegreville, Viking and surrounding area

LLOYDMINSTER PCN 780-874-0490
www.lloydpcn.ca Serving Lloydminster and surrounding area

PEAKS TO PRAIRIES PCN 587-796-0765
www.peakstoprairiespcn.com Serving Olds, Sundre, and surrounding area

CAMROSE PCN 780-608-4927 www.camrosepcn.com
Serving Camrose, Bashaw, Tofield, Daysland, Killam, Forestburg, Hardisty

RED DEER PCN 403-343-9100 www.reddeerpcn.com
Serving Red Deer and surrounding area, including: Red Deer County, Blackfalds, Delburne, Penhold and Springbrook

ROCKY MOUNTAIN HOUSE PCN 403-845-3050
www.rockypcn.com Serving Rocky Mountain House, Caroline, County of Clearwater, Sunchild First Nations Reserve, O'Chiese First Nations Reserve and Bighorn First Nations Reserve

WAINWRIGHT PCN 780-842-6676 Serving Wainwright and surrounding area, including: Chauvin, Edgerton, Irma, Denwood, Fabyan, Kinsella, Loughheed, Hardisty, Amisk, Hughenden, Czar, Metiskow, Ribstone and Heath

WETASKIWIN PCN 780-312-2500
www.wetaskiwinpcn.ca Serving City and County of Wetaskiwin, including: Maskwacjis, Millet, Gwynne, Ma Me O Beach and surrounding area

WOLF CREEK PCN 403-782-1408
www.wolfcreekpcn.com Serving Lacombe, Ponoka, Rimbey, Sylvan Lake and surrounding area

ALBERTA HEARTLAND PCN* 780-895-2022
www.wolfcreekpcn.com Serves Lamont

LAKELAND PCN* 780-645-1188
<http://www.lakelandpcn.com> Serves Two Hills

*Indicates PCN located outside of Central Zone but serving a Central Zone community

KNOW YOUR OPTIONS



When you need health care, you have many options. Knowing your options will help you get the care that's best for you.

Alberta Health Services offers programs and services at over 400 facilities throughout the province, including hospitals, clinics, continuing care facilities, mental health facilities and community health centres. Our skilled and dedicated health professionals promote wellness and provide health care every day to over four million Albertans.

Find out what Alberta Health Services offers in your local area and how you support your health.

www.ahs.ca/options

HEALTH CARE OPTIONS AND INFORMATION

811 Health Link Health Advice 24/7
Call Health-Link at 811 for health advice and information across Alberta. Access is 24-hours, 7 days a week and provides support by experienced registered nurses and other healthcare professionals.

FAMILY DOCTOR
Your best option for on-going health needs. Family Doctors can diagnose and treat most medical issues, and can help manage chronic illness and mental health issues.

URGENT CARE CENTRES
Extended hour access for unexpected, non-life-threatening health concerns, such as broken bones, pain, infections and cuts.

FAMILY CARE CLINICS
Extended hours care, especially for those who need a family physician, have chronic diseases, or addiction or mental health needs.

WALK-IN CLINICS
Some communities have walk-in clinics that often don't require an appointment. Many offer extended hours.

PHARMACISTS
Renew prescriptions, assess minor condition symptoms, offer treatment or refer you to the most appropriate treatment location.

MyHealth.Alberta.ca
This website has trustworthy health information and useful health tools, including a symptom checker.

AHS apps for iPhone and Android
Use your phone to find hospitals, facilities, programs & services in your area. Emergency wait times are available for the Calgary and Edmonton areas.

HEALTH CARE mapping out in your community



IMPORTANT CONTACTS

HEALTH LINK 811
AHS ONLINE
www.ahs.ca is your online source for health care information, services, news and more.

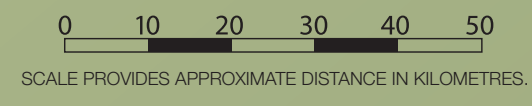


©2016. Alberta Health Services

ALBERTA HEALTH SERVICES CENTRAL ZONE

LEGEND OF SERVICES

- Emergency Departments.** 24-hour care – If you are concerned that you are seriously ill or injured, go to the nearest emergency department. **Patients with potentially life-threatening conditions should immediately phone 911.**
- Emergency Limited Hours.** These communities have emergency health care services available within limited hours. Please contact the facility in your community to confirm the hours for emergency care. Please refer to the back of this map for contact numbers in your community.
- Hospitals.** These are AHS and AHS partner facilities for treating urgent, complex or other health needs on an inpatient basis. Some sites may provide hospital care, continuing care or community health care from one site, called a Health Centre. (Partner facilities are denoted in **brown**.)
- Community and Public Health Services.** These facilities provide a wide range of health services which may include prenatal, postpartum, health promotion/disease and injury prevention, bereavement services, communicable disease and school health, and many other community care, public health and wellness programs.
- Primary Care Networks.** Many family physicians in Alberta are part of a Primary Care Network (PCN) – a group of family doctors working together with a team of other health professionals such as nurses, dietitians and pharmacists to provide care to a defined group of patients.
- Addiction and Mental Health Services.** These facilities and programs are for the treatment and care of people with mental health or addiction challenges.
- Cancer Care Centres.** AHS offers a variety of programs, services and facilities that work with those affected by cancer, as well as provide programs to help Albertans reduce their risk of developing cancer. For more information on the services available in your community, call Central Alberta Cancer Centre (in Red Deer) 403-343-4526.
- Continuing Care.** These are AHS or AHS partner sites offering long term and/or supportive living options in



We have a passion for your health. It's why we do what we do. We know that you are passionate about good health, too. Your opinions, concerns and questions matter.

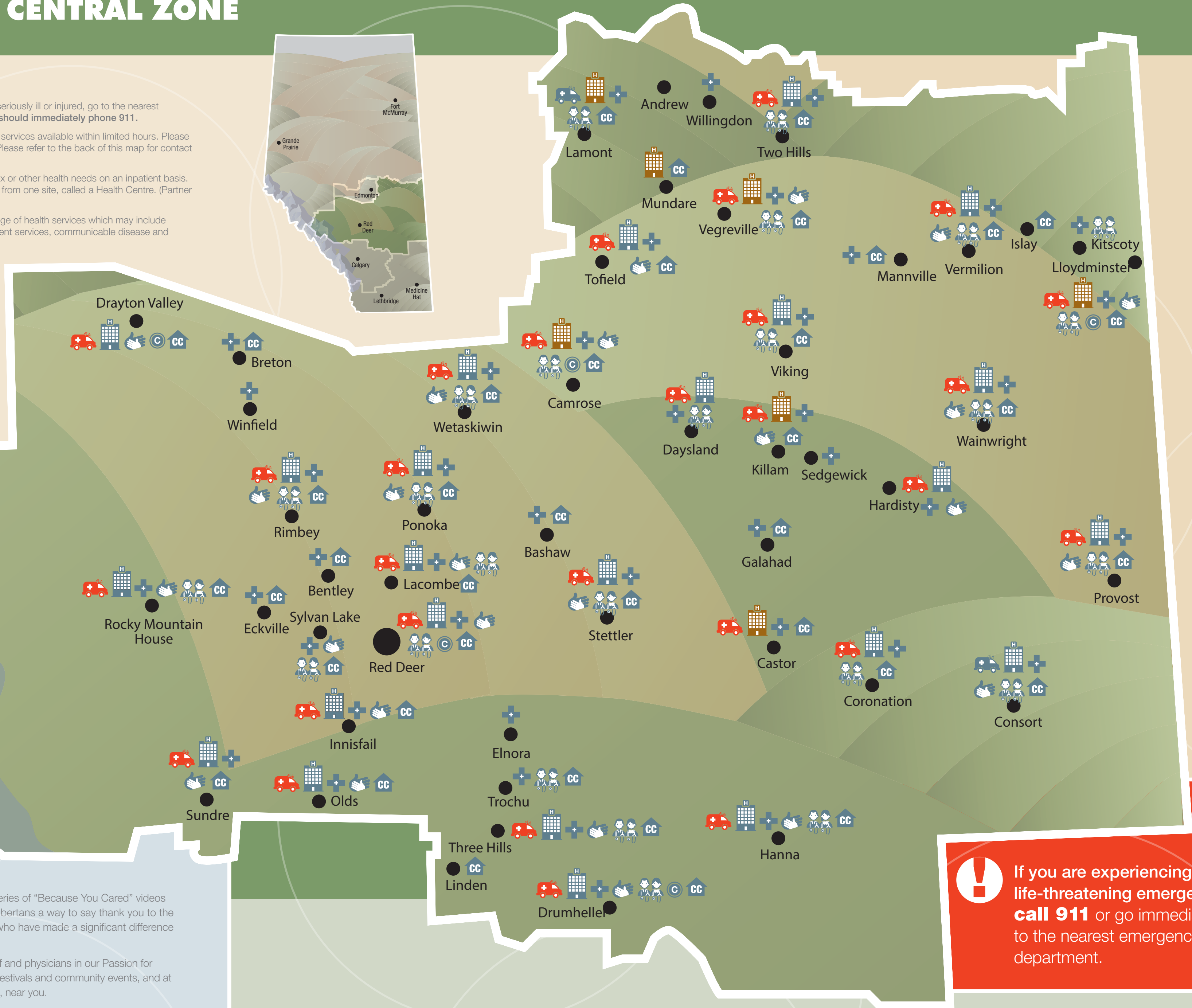
So, we've launched a project called Passion for Health where we can have face-to-face conversations with Albertans; share information on the health topics that interest you; and help you find the resources you need to be healthy.

Through our Passion for Health project, we are attending your community events, inviting you in to our facilities through open houses to see what happens behind the scenes, hosting information sessions called "Apple Talks" and we are providing health information through a blog.

We also have a series of "Because You Cared" videos that have given Albertans a way to say thank you to the health providers who have made a significant difference in their lives.

Look for AHS staff and physicians in our Passion for Health booths at festivals and community events, and at Apple Talk forums, near you.

Share your passion for health with us and visit our Passion for Health website at www.ahs.ca/passionforhealth to find out more.



If you are experiencing a life-threatening emergency, call 911 or go immediately to the nearest emergency department.

HEALTH ADVISORY COUNCILS

Health Advisory Councils (HACs) are focused on one thing: listening to your thoughts and ideas on health care in Alberta. Yellowhead East and David Thompson are the two councils located in central Alberta. Councils act as a channel for information and feedback, and provide advice to Alberta Health Services. The Yellowhead East Health Advisory Council includes communities from Lloydminster to Camrose and Andrew to Provost. The David Thompson Health Advisory Council includes communities from Consort to Rocky Mountain House and Drayton Valley to Drumheller. For more information about the councils, please visit www.ahs.ca/hac.asp

FOUNDATIONS AND TRUSTS

Local health foundations work in your communities, raising funds to improve health care delivery where you live. To support your local foundation, email FoundationRelations@ahs.ca, or visit www.ahs.ca/give

PATIENTS AND THEIR FAMILIES ARE THE CENTRE OF EVERYTHING WE DO AND EVERY DECISION WE MAKE.