



Programs & Services at the Peace River Community Cancer Centre

Cancer Patient Navigator




Cancer Patient Navigators are registered nurses who can support you in understanding more about the next steps in your treatment and guide you in finding the right supports and resources you need throughout your cancer journey.

 780-538-7588
Grande Prairie Cancer Centre

 780-624-7593
Peace River Cancer Centre nurses

Aboriginal Services


Aboriginal Health Liaison Worker (Peace River)

 780-624-7821

Wig Services



The Canadian Cancer Society has wig rooms in various community offices across the country.

 1-888-939-3333





Programs & Services at the Cross Cancer Institute (CCI) in Edmonton

Look Good, Feel Better



This free workshop helps women manage the appearance-related side effects of cancer. Tips, techniques and tools about skin care and how to manage side effects are presented.


 lgfb.ca  1-800-914-5665

Patient and Family Resource Centre

Mon–Fri 9:00 am–4:00 pm	Main floor	780-432-8456
----------------------------	------------	--------------




The centre provides information, referral and library services. You may borrow books or DVD's and CD's, chat with a knowledgeable volunteer or view web-based videos. If you are new to the CCI, call or stop by to arrange a **personalized patient orientation**. The orientation is customized to your needs and takes 20-50 minutes based on areas covered.

 Mon-Fri, 9:30 am–2:30 pm


Aboriginal Services

Aboriginal Cancer Patient Navigator (Cross Cancer Institute)

 780-432-8747

Wig Services



The Cross Cancer Institute also has wig services and provide wig fittings, head shaves and head washes at **no cost**.  780-432-8334

CancerControl Alberta

Resources, support and information
from prevention to treatment and beyond.

www.cancercontrolalberta.ca



Getting to Know Your Cancer Centre Peace River



Peace River Community Cancer Centre

Peace River Community Health Centre
10101 68 Street
Peace River, AB
T8S 1T6

780-624-7593
8:00 am – 4:15 pm
Tuesday –Thursday



CancerControl Alberta

General Information

This pamphlet will help you get to know key things about your Cancer Centre. It is meant to be used with the **Newly Diagnosed with Cancer** book. Please bring the book with you to your appointment if you have one. If not, we will give you one at your first appointment.

You can access the book online at www.cancercontrolalberta.ca > Just Diagnosed.

Where do I park?



Parking Lots

Free, public parking is available at the front of the hospital, near the main entrance.

Drop Off and Pick Up

There is a drop off and pick up area at the main entrance of the Peace River Community Centre.

Checking in for your first appointment



First Appointment

The Cancer Patient Navigator will contact you before your first appointment and give you more information.

Chemotherapy Treatment

Go directly to the cancer clinic. From the main front entrance, turn left, proceed down the hall to the end, and turn left again. You will see the chemotherapy sign above the clinic.

Lab and Diagnostic Imaging Tests

Check in at the main reception desk.

What do I need to bring with me?

Find a checklist of items to bring in the **orange section** of the **Newly Diagnosed with Cancer** book. If you don't already have a copy, ask your cancer care team for one.



Places to stay



If you live outside the Peace River area and require overnight accommodation, ask your nurse, social worker or cancer patient navigator for a list of local hotels that offer reduced rates. The Shell Rotary House, located steps from the hospital, is also available for patients and families with both nightly and weekly rates.

Can I bring electronics?

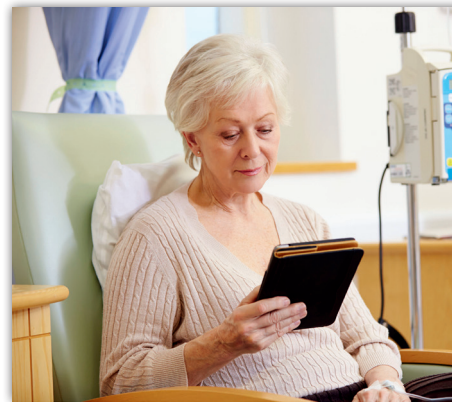


Yes, you may bring your cell phone, laptop, tablet or other devices. Please be respectful and:

- Put your phone on vibrate
- Bring earphones for entertainment devices
- Network: Healthspot (no password required)



It's a good idea to bring something to read or do while you wait for your appointments.



Where can I get my prescriptions filled?



Your cancer treatment medications come from the Cross Cancer Institute in Edmonton. Support medication prescriptions (like anti-nausea medications) can be filled at your regular community retail pharmacy.

Where can I get my bloodwork drawn?



Where possible, we will ask you to have your bloodwork drawn at a lab nearest you. If you need to have bloodwork done while you are at the cancer centre, a lab is available on site.

Mon–Fri 8:00 am–4:30 pm	Main Floor	780-624-7517
----------------------------	------------	--------------

Where can I eat?



Hospital Cafeteria

\$	Cash only (ATM available in the cafeteria)
📅	Monday–Friday 8:00 am–4:00 pm
	Saturday–Sunday 9:30 am–1:15 pm
📍	Basement floor

- Vending machines are available near the main reception and the Emergency waiting room.
- ATMs are available in the cafeteria and near the main reception desk.

Connecting with programs and services virtually (Telehealth)



It may be possible to virtually join education sessions or connect with health care providers at other cancer centres. You may be able to access Telehealth services at another health centre closer to home. Ask your cancer patient navigator, social worker or other cancer care team member if this service is available.